

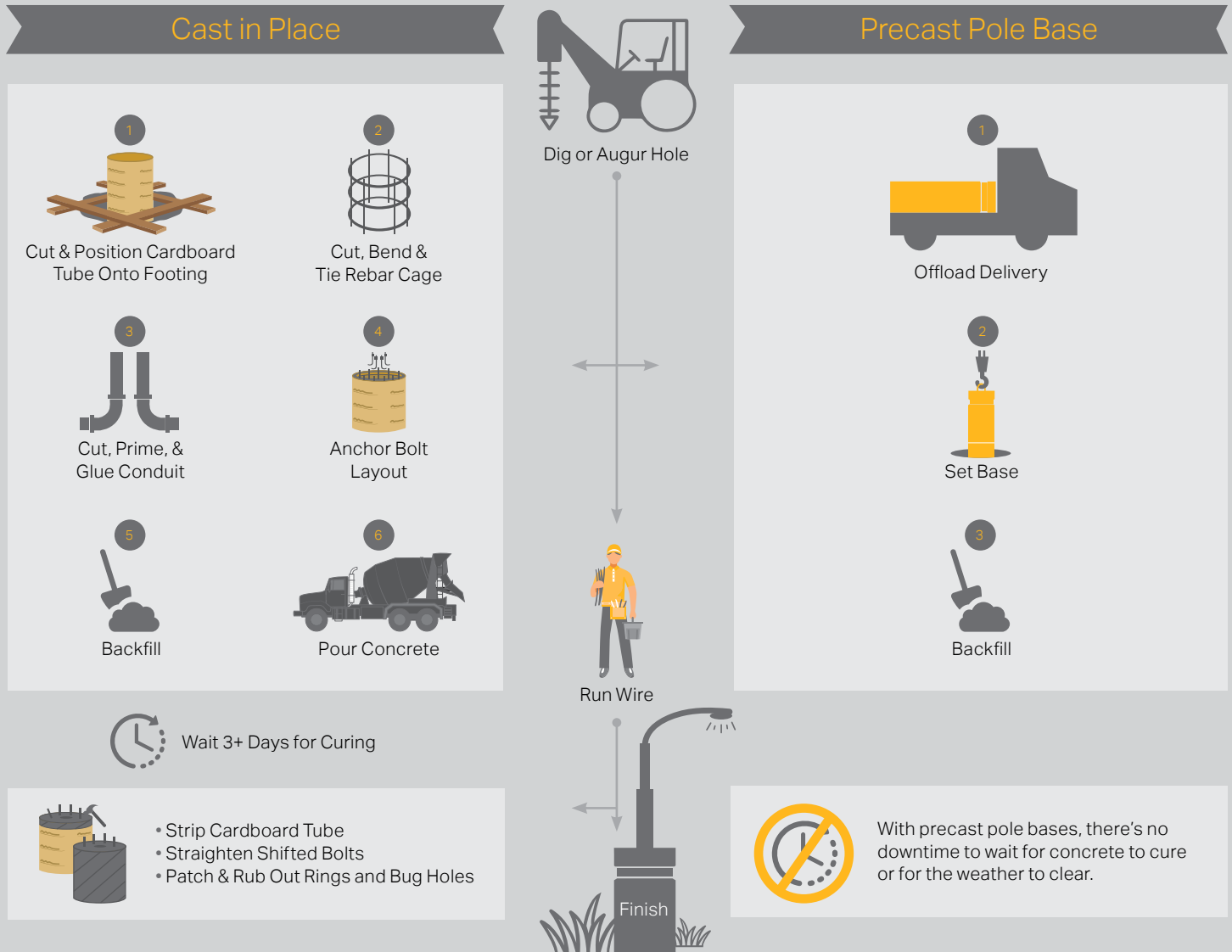
Cast-in-Place vs. Precast Light Pole Base

Pouring a concrete base onsite for light poles is how it's always been done.

But, it's not how it has to be done.

- Simplify your scheduling
- Streamline your installation process
- Reduce the chance of error
- Install bases in a single day, regardless of weather

There's a lot that goes into installing site lighting, and precast pole bases can help streamline the installation process.



Take back control of your job site and schedule! Pole Base is a precast foundation built to spec that simplifies your work and saves you time, making your jobs more predictable and more profitable.



Want to know exactly how much time Pole Base can save you?
Download the Cast-in-Place vs. Pole Base calculator worksheet to find out.

PoleBase.com/calculator

pole base